

ADD



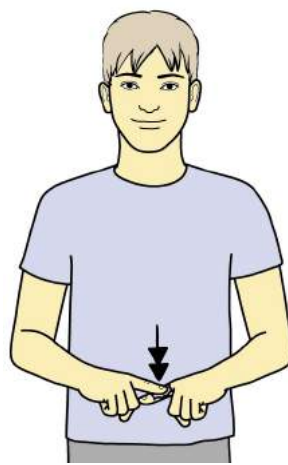
Supporting clawed hand (palm down, pointing forward) above working clawed hand (palm up, pointing forward); hands move together while closing to full "O" hands, fingertips touching.

SUBTRACT



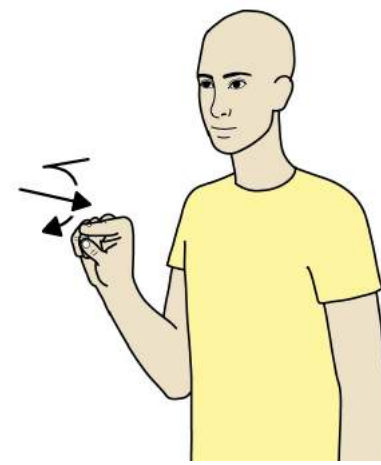
Working clawed hand (palm down, pointing forward) brushes down supporting flat hand (palm back, pointing in) to finish in a fist.

MULTIPLY



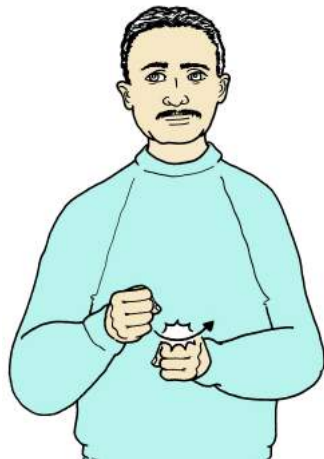
Make letter shape "X" tapping twice.

DIVIDE



Working bent index hand (palm forward, pointing up) moves out a short way then makes short forward movements above and below imaginary line.

PRODUCT



Make letter shape "X"; then working fist (palm in, pointing forward) strikes twice across supporting fist (palm in, pointing forward) striking only once.

EQUALS

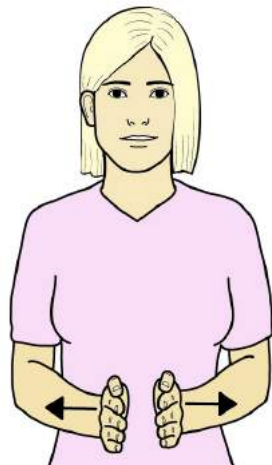


Flat hands (palms down, pointing forward) held together; formation makes horizontal circle to the supporting side.

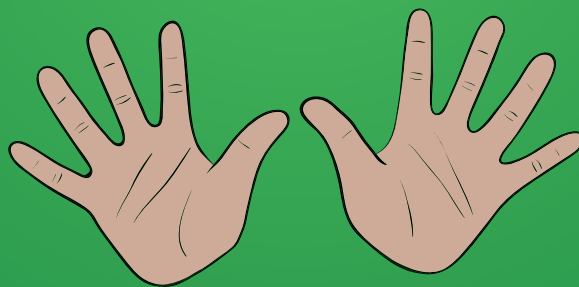


MATHS

LONG

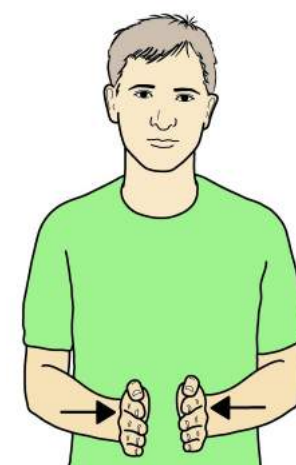


Flat hands (palms in, pointing forward) move apart.
Directional sign.



© SIGNALONG
www.signalong.org.uk
info@signalong.org.uk

SHORT



Flat hands (palms in, pointing forward) held apart in front of body; hands move towards each other.

LESS



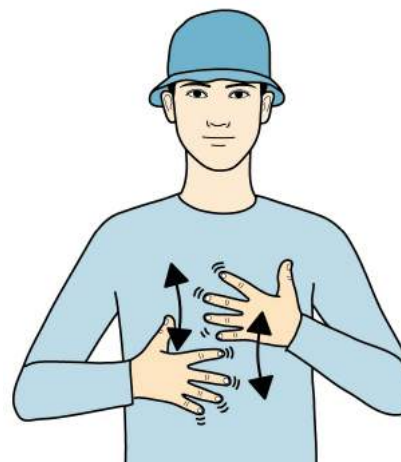
Bent "N" hands (palms in/up, pointing up/out) make a short movement down and in towards each other.

MORE



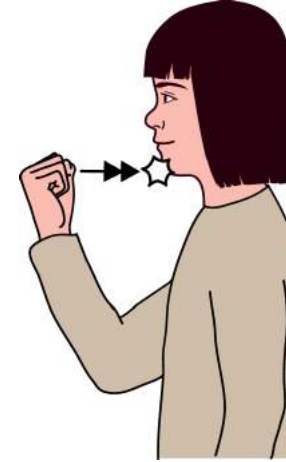
Working flat hand (palm up, pointing forward) moves and turns over onto supporting full "C" hand (palm in, pointing forward).

NUMERACY



Open hands (palms back, pointing in) move up and down alternately with fingers fluttering.

NUMBERS



Working fist (palm back, pointing up) taps chin.